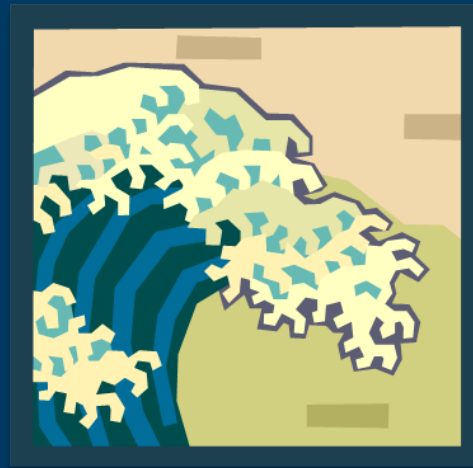


“Riding the Wave”



27th Women in Ag Conference
Kearney, Nebraska
February 23/24, 2012

Do you ever feel like a fish out of water when you come into the FSA office?

Don't!

This workshop will help you understand the basic Farm Service Agency (FSA) programs available.



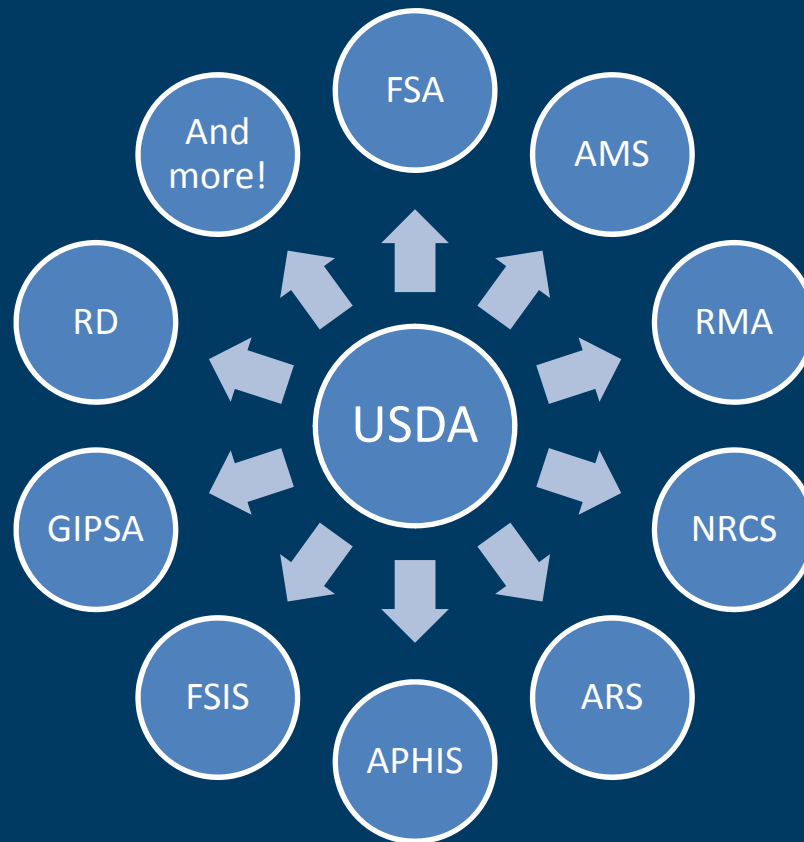
Let's dive in, and get our feet
wet!



What is FSA's Role?

- At FSA we strive to:
 - Equitably serve all farmers & ranchers
 - Deliver effective and efficient farm programs that are dedicated to achieving an economically and environmentally sound future for American Agriculture
 - “Safety Net”

So What Does That Mean?



FSA is one of many agencies in the “USDA Umbrella”

How FSA Works

- Congress passes a Farm Bill once every 5 years that dictates USDA's work
- Farm Bill extends, modifies, removes or creates new programs
- FSA then administers many of those programs

2008 Farm Bill Change Examples

- Direct & Counter-Cyclical Program (DCP)
 - Modified, but basically kept the same
- Average Crop Revenue (ACRE)
 - Brand new
- Supplemental Revenue (SURE)
 - New, but similar to old crop disaster programs

What About the Next Farm Bill?

- Will be written in 2012 or 2013
- Will most likely be for a 5 year period
- Planning meetings & sessions have begun

FSA Programs in Nebraska

- Compliance
 - Acreage reporting (“certification”)
- DCP or ACRE (“Sign Up”)
 - For farms with a history of “base” that aren’t developed or growing fruits & vegetables
- SURE
 - Permanent crop disaster program

FSA Programs in Nebraska

- Commodity Loans
 - For grains like corn, wheat, soybeans, etc.
 - Can be farm or warehouse stored
 - Short term, low interest loans
 - Feb '12 - 1.125%
- Conservation Reserve Program (CRP)
 - 10 to 15 year contracts that remove cropland from farming, and provide cost share for restorative practices

FSA Programs

- The programs mentioned above are ones that are common through the state.
- Please feel free to visit your local office any time. If you have more questions, we'd be happy to talk with you!

Eligibility

- In addition to the paperwork required by each program, a producer has to be “eligible”.
- Usually requires:
 - CCC-902 Farm Operating Plan
 - CCC-931 Adjusted Gross Income (AGI) Statement
 - AD-1026 HEL/WC Certification



What should I be in the office for right now?

- **March 15th**
 - Deadline to buy NAP for grass, alfalfa, mixed forage, sorghum hay, spring seeded annuals
- **March 12th thru April 6th**
 - CRP General Sign Up

- **June 1st**
 - DCP/ACRE Contracting Deadline
 - Changes in existing entity structure or membership must be made
- **June 30th**
 - Acreage Reporting (Certification) Deadline
 - Small grains – wheat, oats, etc.

- **July 15th**
 - Acreage Reporting (Certification) Deadline
 - All other crops & CRP
 - 2011 Production for ACRE and NAP crops due
- **July 29th**
 - 2009 SURE Crop Disaster Deadline

Common FSA Terms

- ***Farm***
 - Like ownership & operatorship of land

- ***Tract***
 - Same as farm + all land must be contiguous
 - Ex. One farm may have 3 tracts of land
 - A tract can have one or more fields on it

Common FSA Terms

- ***Eligibility***
 - General reference to your 902, 1026, 931 etc.

- ***Farm Operating Plan***
 - A form that tells FSA how you or your entity is operating for that crop year

Common FSA Terms

- ***Spousal Signature Authority***
 - Unless FSA is otherwise notified, spouses can sign for each others as individuals
 - If a spouse is a member of an entity, the other spouse cannot sign w/o a POA
- - there are a few instances when a spouse cannot sign for a spouse – Ag Loans is one.

Power of Attorney

POA - An FSA-211 that allows you to sign for someone else as FSA doesn't accept Durable POA's in general.

****remember to rescind any POA when your situation changes.**

Common FSA Terms

- ***Farm Changes***

- Any change that occurs on the farm that can affect contracting and/or eligibility
- Examples: Change in landownership, bringing a new tenant onto the farm, adding a member to your entity, etc.
- It's really important to let the FSA office know of these!

Looking at getting into farming?

- Be sure to talk with an FSA Farm Loan Officer to see if you qualify for FSA's low interest loans!
- Operating, land ownership and bin loans are available.



Ride the Wave Farther...



- Questions about programs or eligibility?
 - Talk to your County Office staff!
- Concerns with County Office Staff?
 - Talk to a County Committee (COC) Member
- Concerns with future procedure?
 - Send an email to your Congressman or talk to a representative from your grower's association

Questions?

